

Waterpark Scales

SR1601 Series

SR “Purpose-Built” waterpark scales are designed to move riders quickly and safely using a **Go/No - Go** light system. Individual and group weights are qualified in a single platform station including raft seat ordering.

Modular scale pads can provide up to 6 individual rider maximums and up to 4 different slides where low and high weight limits are required. This allows for a single scale system on towers where multiple slides launch. Additionally the riders can be numbered on the scale display for raft placement by the operator.

SR waterpark scales are designed to supply years of maintenance-free use and are built from 316 stainless steel frame covered with non-slip plastic tops, hermetically sealed load cells, and sealed display components.



MULTIPLE Go/No - Go CONFIGURATIONS

SR waterpark scales are capable of showing up to 4 rider **Go / No - Go** lights, or a single light for up to six riders. The scale also supports 4 different **Go / No - Go** lights for slides sharing the same tower with different weight limits. Each output is easily programmed through the scales touch screen display. See back for more details.

NON-SLIP SURFACE

The scale has a non-skid textured solid plastic plate surface.

DATA OUTPUT

Scale comes standard with ModBus communication for integration with industry standard data acquisition systems.

SCALE PAD SIZE

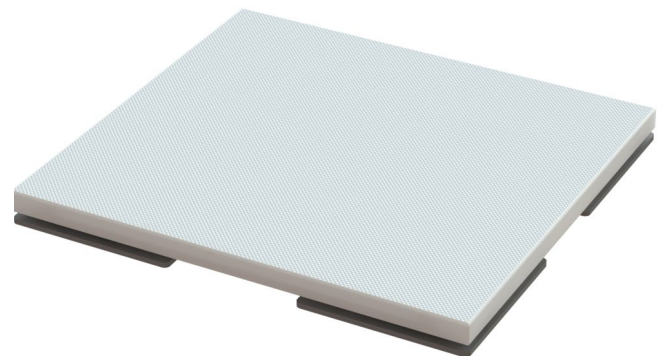
Individual scale pad is 22" x 22" providing individual rider weight.

ACCURACY

0.5% +/- 1 digit of displayed resolution

POWER

EN60950-1 approved AC/DC power supply



Waterpark Scales

Model SR1601 Series

SYSTEM SPECIFICATIONS

INDIVIDUAL SCALE PADS

22" x 22" x 1.6" non-slip scale pads.
500 Lb / 227 Kg per platform
Scale system may have up to 6 platforms.

DISPLAY RESOLUTION 1 Lb / 1 Kg

ACCURACY 0.5% +/-1 digit of displayed resolution.

POWER Input: 90 - 264VAC @ 47 - 63Hz.
Output: 5VDC, 1~9.5 A for display.
12VDC, .3~4A for lights.
Power supply is mounted inside a metal enclosure within the display.
EN60950-1 approved.

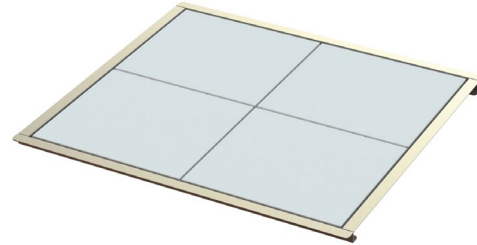
DISPLAY HOUSING NEMA 4x enclosure with latching door.
Boxes are supplied with a 1/2" push-lock fitting for AC connection. Scale and light inputs plug into the bottom of the housing with sealed connectors.

LIGHT OUTPUTS Every SR waterpark scale comes with four individual rider light outputs and four different slide outputs for a total of eight Go/No - Go lights. For systems with more than four individual scales there is a single rider light output.

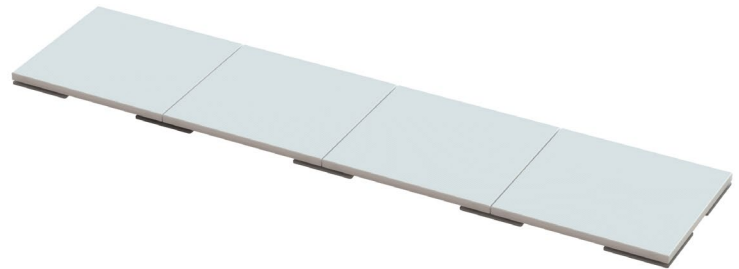
WARRANTY 2 years

SR1601-4 SHOWN WITH OPTIONAL SM1602-4R PIT FRAME

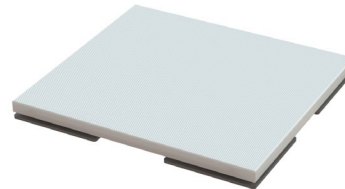
FRAMES SOLD SEPARATELY



SR1601-4



SM1601-PLATFORM



SM9775

LIGHTS SOLD INDIVIDUALLY



SM1601-RO FULL READOUT ASSEMBLY



Bottom of display has RJ45 connection for data transfer to launch control system. (6) scale input connections. (4) individual rider light outputs with one common rider light output, and (4) slide light outputs. 120V AC input with 1/2" conduit.

Model #	Description	Pit frame options *sold separately	Outer size with frame option.
SR1601-1	1 Person scale system	SM1601-1R	26.375" x 26.375"
SR1601-2	2 Person scale system	SM1601-2R	26.375" x 48.50"
SR1601-3	3 Person scale system	SM1601-3R	26.375" x 70.625"
SR1601-4	4 Person scale system	SM1601-4R SM1602-4R	26.375" x 92.75" 48.50" x 48.50"
SR1601-5	5 Person scale system	SM1601-5R	26.375" x 114.875"
SR1601-6	6 Person scale system	SM1602-6R	48.50" x 70.625"
SM9775	Go/No Go light Assembly *sold separately		